



 A.R.I.  DOROT  OCV

Superior Waterworks Solutions



Innovative Engineering.
Sustainable Solutions.
Smart Water.

Innovative Engineering



DOROT Series 300

This product line of automatic control valves is designed to withstand the most demanding requirements of water system control. Standard on all sizes, the Dorot Series 300 has the capability to regulate near zero flow, eliminating the need for special low-flow devices and/or valves. These expertly developed and technologically advanced control valves have capabilities far beyond any other on the market.

PRESSURE REDUCING  PRESSURE SUSTAINING  ELECTRONIC & REMOTE CONTROL FUNCTIONS
RATE OF FLOW REGULATING  WATER LEVEL CONTROL & MUCH MORE

Features & Benefits:

- Flange (face-to-face) dimensions suit ISO Standards.
- The internal floating shaft creates frictionless operation and also provides easy field maintenance.
- Resilient seal disc guided by a frictionless centering device.
- Body is made of Ductile Iron to withstand high hydraulic and mechanical stresses.
- Standard single chamber valve provides smooth operation in sensitive regulation conditions. Conversion from a single to a double chambered valve is easily accomplished through the insertion of an innovative separation disc - without the need to remove the valve from the pipeline.
- The replaceable Stainless Steel seat provides durability against erosion and ensures a drip-tight seal.
- During valve closure the rate slows, preventing potential damage from water hammer or surges.
- The Dorot Series 300 includes an optional valve position indicator, attached by a floating connection (ball & socket), resulting in smooth movement, with no wear or tear on the indicator seal.

Dorot 30-AL 3W Pilot Controlled Altitude Valve

This Pilot Controlled Altitude Valve is an automatic, level control, pilot-controlled valve, activated by the pipeline pressure. The main valve is controlled by a highly sensitive pilot, located outside the tank. The pilot opens or closes the valve in response to the static pressure of the water. The pilot allows for differential adjustments between the maximum and minimum level.



Dorot 30-EC Electronic Control Valve

This 30-EC is an automatic, solenoid control valve, activated by the pipeline pressure. The valve is controlled via the versatile Dorot ConDor controller, which enables all control functions, or combination of functions, to be performed with extreme accuracy. Can be controlled by any pulse-activating controller.



Dorot 30-FR Flow Control Valve

This Flow Control Valve is activated by the pipeline pressure. The valve limits the flow rate in the network to a preset value, regardless of upstream pressure variations. The valve fully opens when the flow rate drops below the set point.



Dorot 30-HyMod Flow Modulated Pressure Reducing Valve

This 30-HyMod is an automatic pilot-controlled, flow-modulated pressure reducing valve activated by the pressure of the pipeline. The valve reduces upstream pressure to a downstream pressure that increases or decreases simultaneously with the demand flow. The pressure into the zone is continually adjusted according to the zone's actual demand, thus compensating for the system loss. The pressure-flow profile can be adjusted. The HyMod will control from no flow, to maximal full open flow without any chattering or slamming.



Dorot 30-PR Pressure Reducing Valve

This valve, activated by the pressure of the pipeline, reduces high upstream pressure to a steady, predetermined and lower downstream pressure, regardless of fluctuations in upstream pressure flow rate. When the downstream pressure exceeds the set value, the valve will close drip-tight.



Dorot 30-PS Pressure Sustaining Valve

This Pressure Sustaining Valve is activated by the pipeline pressure. The valve maintains a steady, predetermined pressure in the network, upstream of its location. Should the upstream pressure exceed the required set-point, the valve opens, increasing network flow, thus reducing its upstream pressure. If upstream pressure falls below the required value, the valve closes drip-tight.



Sustainable Solutions



WATER SUPPLY  WATER LOSS REDUCTION  WASTEWATER
AGRICULTURE  INDUSTRY  DIGITAL SOLUTIONS

ARI D-025SB

Underground Air Valve System - Wastewater

This air valve system is a complete product package, combining the reliable and efficient properties of the ARI D-025 combination wastewater air valve with the added feature of a subsurface valve created for underground burial. A specially designed horizontal sliding disc valve, situated at the base of the assembly, allows for the air valve disconnection and maintenance from ground level.

ARI D-040

Combination Air Valve "BARAK" - Water Supply

The D-040 series Combination Air Valve has the features of both an air release valve and an air & vacuum valve. The air release component is designed to automatically release small pockets of air to the atmosphere as they accumulate along a pipeline or piping system when it is full and operating under pressure.

ARI D-26

Combination Air Valve – Wastewater

The D-26 Combination Air Valve combines an air & vacuum orifice and an air release orifice in a single body. The valve is specially designed to operate with liquids carrying solid particles such as wastewater and effluents.



Monitor your air valves anytime, anywhere.

ARISENSE provides unprecedented "remote" visibility into air valves and pipes, reducing operational costs and preventing fines caused by Leakage, Overflow, Clogging, Tilting, Tamper, High Pressure and Flooding.

- **Gain 24/7 "remote" visibility** into air valve functionality.
- **Receive instant alerts** about Leakage, Overflow, Clogging, Tilt, Tamper, High Pressure or Flooding.
- **Detect potential failures or faults** and identify air valves in need of immediate maintenance.
- **Provides cost-effective maintenance** in planning inspections & services according to real needs.
- **Get pressure data** that helps protect pipeline systems against leaks & blockages.
- **Reliable & advanced air valves** building on the trusted A.R.I. expertise and technology.

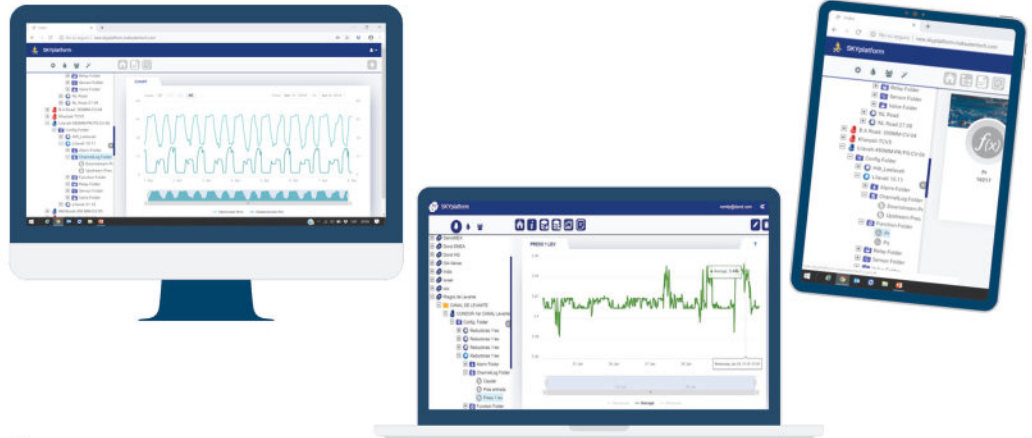


Smart Water

Dorot ConDor

The Dorot ConDor is an automatic and autonomous system enabling hydraulic control valves to perform any function or combination of functions, whether constant or dynamically modulating, via local and remote control. It is an integrated system combining hardware (the controller), firmware (the software), HMI software for mobile devices, and Cloud services.

The Dorot ConDor enables customers all over the world to remotely control hydraulic valves and optimize their performance. With its advanced control algorithm, customers can monitor the performance of valves and configure settings remotely.



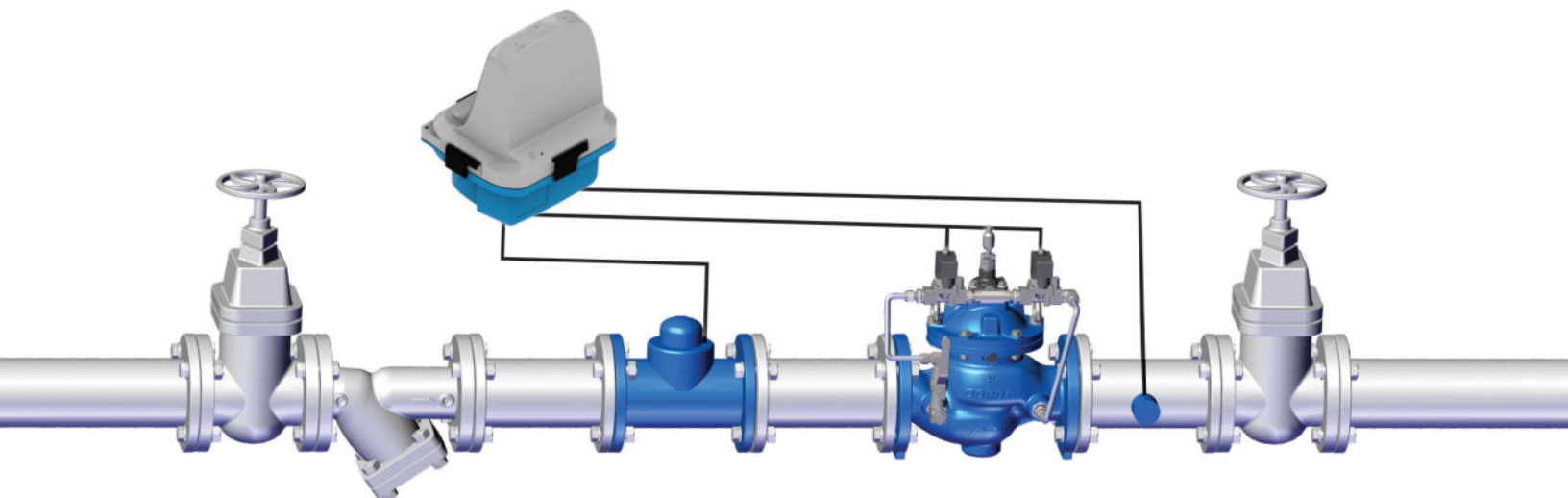
Features & Benefits:

- Remote & Local Control
- Cellular & Bluetooth Communication
- Several Active Hydraulic Functions Configured Simultaneously
- Proprietary Cloud-Based Command & Control System – SKYplatform (mini SCADA)
- MODBUS & OPC Protocol Support – for seamless SCADA system integration

The Dorot ConDor is the most advanced hydraulic valve controller that:

- Can be configured to perform any control function or combination of functions.
- Enables the user to configure each and every regulating valve, user defined dynamic controls and telemetry-controlled applications.
- Allows the owner to configure a valve application within minutes after a short, one-hour training session.
- Provides unlimited freedom to create a customized control configuration and upload it to a server for future use (duplicate to other systems).

The Dorot ConDor is the only real, flexible system that puts the power in the hands of the network owner. The owner can perform their own concept of hydraulic control for each specific case, completely independent of programmers or supplier services.





 A.R.I.  DOROT  OCV

Superior Waterworks Solutions

Innovative Engineering.
Sustainable Solutions.
Smart Water.

Aquestia, the result of merging OCV Control Valves, A.R.I. Optimal Flow Solutions and Dorot Control Valves, presents a combined 180 years of experience developing sustainable fluid control solutions. Blending these three successful brands into one entity provides a vast array of product solutions, ensures a high level of global customer service, and offers unparalleled expertise and innovative technologies.



www.aquestia.com

Aquestia USA Email: usa@aquestia.com

A.R.I. Phone: + 1 888-727-4872 | www.ariusa.com

Dorot www.dorot.com | www.dorotdigitalsolutions.com

OCV Phone: +1 918-627-1942 | Toll-Free: 1-888-OCV-VALV (628-8258) | www.controlvalves.com