

HYMAX® by Krausz Wide-Range Coupling Solutions



HYMAX. CONNECTING THE FUTURE.

Krausz HYMAX® coupling solutions feature advanced engineering and innovative design, enabling fast installation, outstanding flexibility, and extreme durability in varied conditions. These benefits make the Krausz HYMAX® the high-performance, cost-effective choice for a broad variety of applications. A revolutionary product that set a new industry standard, the Krausz HYMAX® product line has been field-proven in millions of installations world-wide.



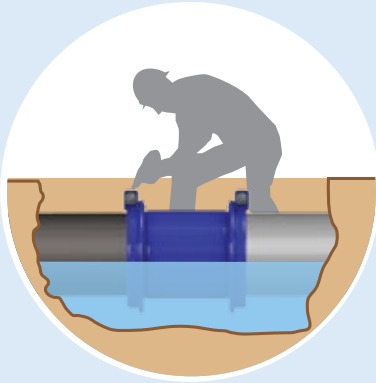
JOIN



REPAIR



RESTRAIN



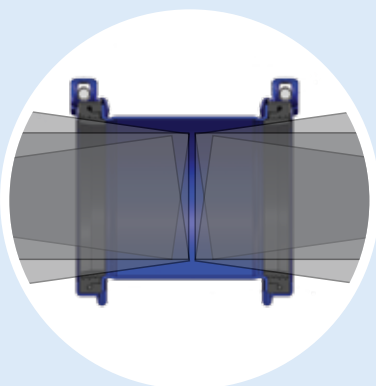
Fast and easy installation

- Lightweight construction enables fast and easy installation, with minimum manpower, reducing time in the ditch and improving worker safety.
- Unique top-facing bolts enable easy installation access.
- Ready-to-use, stab-on design eliminates the need for extensive under-pipe digging and work.



Multiple applications

- Broad variety of products, from couplings to flange adaptors and reducers.
- Extensive portfolio of products with 1.5" - 60" nominal pipe size.
- All products work with a variety of pipe materials: ductile iron, cast iron, steel, copper, PE, PVC, AC, and GRP.
- One single product can connect pipes of two different materials, allowing transition capability of up to 2.1".



Flexible connection

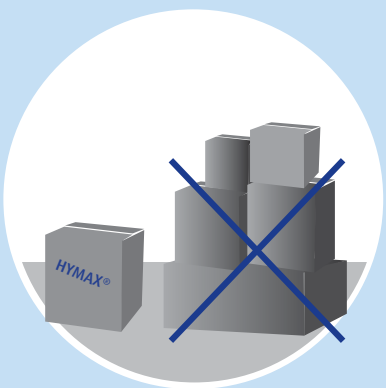
- During installation, allows for up to 4° angular deflection on each end, as well as for misaligned pipes.
- Absorbs post-installation dynamic pipe deflection of up to 4° on each end, reducing the risk of damage and cracking due to ground shifts and temperature changes.
- Adapts to out-of-round pipe shape (up to 0.51"), for optimum fit on both ends.

FAMILY FEATURES



High durability

- High-quality sealing solution – patented hydraulically-assisted gasket features two-stage sealing: mechanical sealing that is effective under vacuum or non-pressure; and self-inflated gasket using water pressure.
- Fusion-bonded epoxy coating enables an insulated product and prevents corrosion.
- Nuts, bolts and other components are made of stainless steel.
- Innovative radial closing design and sealing systems eliminate installation errors.
- Advanced Molecular Anti-Galling (MAG) unique dry treatment process on nuts and bolts, based on embedded zinc, prevents galling and enables repeated bolt tightening; it also eliminates the need for grease, preventing dust and dirt build-up.
- Monoblock design delivers fortified strength and enhanced flexibility.



Cost-saving

- Hymax products suit a wide range of pipe diameters, replacing the need to use dedicated products and thus reducing inventory costs and saving shelf space.
- Fast and easy installation saves time and money.

THE HYMAX

Spherical Spacers -
Type 304L Stainless Steel

Nuts & Bolts - Type 304 Stainless Steel
Rolled thread and anti galling coating

End Rings - ASTM A283/
A283M Grade C Steel



Gasket Bridge - Type
304 Stainless Steel

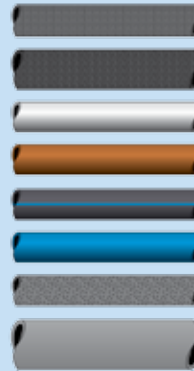
Center Ring - ASTM A53
Grade A Steel

Double Layer Gasket - EPDM
compounded for water and sewerage

Coating - 100% fusion bonded epoxy for
enhanced corrosion protection

* Picture is based on HYMAX 1.5"-12" - materials may vary between different product sizes.

FAMILY FEATURES



- Ductile Iron
- Cast Iron
- Steel
- Copper
- PE
- PVC
- Asbestos Cement
- GRP



Krausz HYMAX - Wide Range Coupling



Nominal Pipe Size
1.5" - 12"



Nominal Pipe Size
14" - 24"



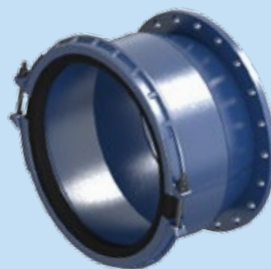
Nominal Pipe Size
26" - 60"

Wide-range HYMAX Coupling, used for section replacement, connects two pipes of the same or different OD pipe diameters and materials, up to 2.1" range.

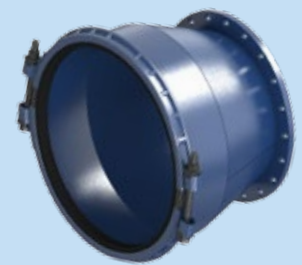
Krausz HYMAX - Flange Adaptor



Nominal Pipe Size
1.5" - 12"



Nominal Pipe Size
14" - 24"



Nominal Pipe Size
26" - 60" (Made To Order)

Wide-range HYMAX Flange Adaptor connects any flanged device, such as valves, pumps and other devices, with a variety of pipe diameters and materials, up to 2.1" range.

OFFERING

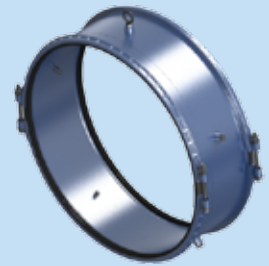
Krausz HYMAX - Long Body



Nominal Pipe Size
1.5" - 12"



Nominal Pipe Size
14" - 24"



Nominal Pipe Size
26" - 60"

Wide-range HYMAX Long Body Coupling, used for pipe section replacement, connects two pipes of the same or different OD pipe diameters and materials, covering a wider gap between the pipes, with up to up to 2.1" range.

Long couplings are typically used when there is uncertainty regarding the gap between the pipes.

Krausz HYMAX - Reducer



Nominal Pipe Size
1.5" - 12"



Nominal Pipe Size
14" - 24"



Nominal Pipe Size
26" - 60" (Made To Order)

Wide-range HYMAX Reducer joins pipes different nominal sizes and materials. Each side has a tolerance of up to 2.1", joining pipes made of a variety of materials.

Krausz HYMAX - Flanged Outlet



Nominal Pipe Size
1.5" - 12"



Nominal Pipe Size
14" - 24"



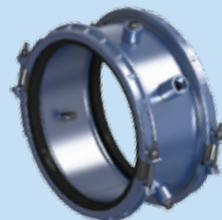
Nominal Pipe Size
26" - 60"

HYMAX Flange Outlet provides effective outlet solutions for a wide variety of piping types and diameters, joining pipes made of the same or different materials, and with varying diameters of up to 2.1".

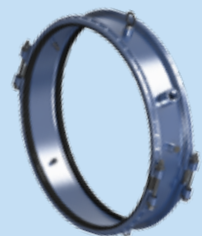
Krausz HYMAX - Threaded Outlet



Nominal Pipe Size
1.5" - 12"



Nominal Pipe Size
14" - 24"



Nominal Pipe Size
26" - 60"

HYMAX Threaded Outlet provides effective outlet solutions for a wide variety of piping types and diameters, joining pipes made of the same or different materials, and with varying diameters of up to 2.1".

OFFERING

Krausz HYMAX - Elbow



Nominal Pipe Size
1.5" - 24"

Wide-range HYMAX Elbow joins two pipes of the same or different diameters and materials, with an elbow of up to 90° angle.

Krausz HYMAX - Cathodic



Nominal Pipe Size
1.5" - 24"

Wide-range HYMAX Coupling with cathodic anti-corrosion protection feature connects two pipes of the same or different diameters and materials.

*For specific size availability, please contact your nearby Territory Sales Manager.
Refer to our website for contact information: www.krauszusa.com





HYMAX Product Information

1. HYMAX meets or exceeds all specifications of AWWA Standard C219, NSF-61 and NSF-372.
2. Center Ring:
 - 1.5" – 12": ASTM A53 Grade A Steel.
 - 14" – 60": ASTM A283/A283M Grade C Steel.
3. End ring: ASTM A283/A283M Grade C Steel.
4. Gaskets: EPDM compounded for water and sewage, meets NSF-61 and NSF-372 standards for contact with drinking water.
5. Nuts and bolts: ANSI 304 Stainless Steel. Rolled thread and Molecular Anti Galling (MAG) treatment.
6. Bridge: ANSI 304 Stainless Steel.
7. Coating: 100% fusion bonded epoxy for enhanced corrosion protection. Average thickness 14 mil, meets NSF-61 and NSF-372 standards.
8. Deflection up to 4° per side (one side only for Flange Adaptor).
9. Working pressure: up to 260 PSI.
10. Rated pressure: up to 360 PSI.
11. Working temperature: -20°F up to +125°F.

* Data may vary according to product type and size. For product specification sheet please refer to our website: www.krauszusa.com



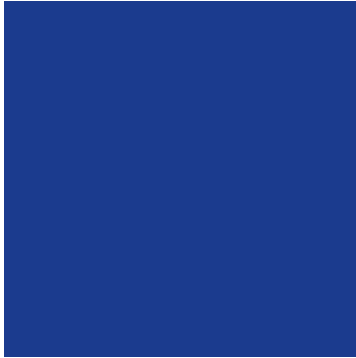
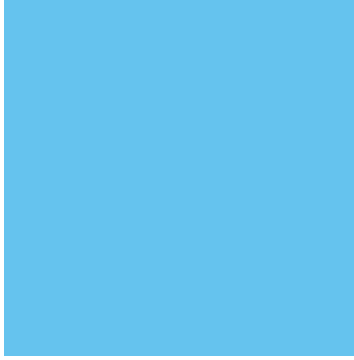
Two Layer Gasket allows adjusting to pipe diameter

90 YEARS OF INNOVATIVE PIPE JOIN AND REPAIR SOLUTIONS



Krausz Industries develops, designs, and manufactures market-leading smart products for repairing and connecting different types of pipes for potable water and sewage. During more than 90 years of industry leadership, Krausz has earned a solid reputation for innovative, high-quality products that are exceptionally easy to use and are extremely durable; products that save significant time and cost in installation, inventory and maintenance. Like its products, Krausz is here to stay, committed to serving the industry long into the future.





KRAUSZ USA

331 SW 57TH AVENUE, OCALA, FLORIDA 34474

TEL: 855-457-2879 OR 855-4KRAUSZ

FAX: 352-304-5787

INFO@KRAUSZUSA.COM

WWW.KRAUSZUSA.COM



JOIN



REPAIR



RESTRAIN